



Bringing Unparalleled Connectivity, Collaboration, and Visibility to the Supply Chain

POWERED BY TURVO

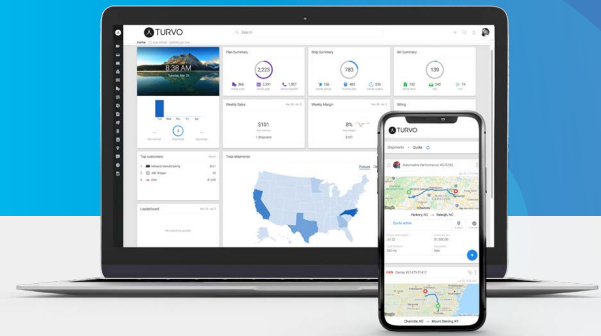
Overview

Youredi, a leading provider of fully managed data integration services and solutions for logistics and the global supply chain, has partnered with Turvo to bring data integration and EDI communication to the next level. Youredi complements the Turvo platform to help bridge the communication gap between shippers and carriers by translating data (any format) into something comprehensible and actionable for all parties.

Through collaboration, Youredi and Turvo bring harmony to the supply chain.

- ✓ Youredi serves as an intermediary that connects shippers and carriers using EDI messaging to Turvo's modern API.
- ✓ Seamless communication helps improve and automate the flow of data, providing Turvo customers powerful, actionable insights into their supply chain and day-to-day operations.
- ✓ The automated system removes the chances of human error and brings data transfer speed to near-instantaneous.
- ✓ Youredi also helps with financial data integration challenges, such as billing data integrations or information exchange for ocean booking process. From booking requests to transport documents, or from sailing schedules to invoices.

Youredi provides a unique service for shippers and carriers. By partnering with Turvo's best-in-class TMS solution, that unique service was powered up, creating a solution that is both comprehensive and elegant.



Benefitting Customers

The Spirit of Collaboration

Turvo aims to bring the power of collaboration to its customers and change the way that shippers and carriers do business for the better. The partnership between Turvo and Youredi does just that. By bringing Youredi as a technical integrator, it allows customers to:

- Foster superior EDI communication gap and any other API integration.
- Increase potential customer base.
- Improved collaboration through system communication.
- Remove possibility of human error due to manual data entry.

The data exchange is processed in near real-time, and automated mapping processed through both Youredi and Turvo's TMS turns it into intelligible and actionable information.





The Business Challenge

Although EDI is sometimes seen as an older technology from the 1970s, it is still quite popular for B2B data transactions across the logistics and supply chain landscape. If a TMS isn't capable of interpreting EDI messages, it increases missed opportunities between both shippers and carriers.

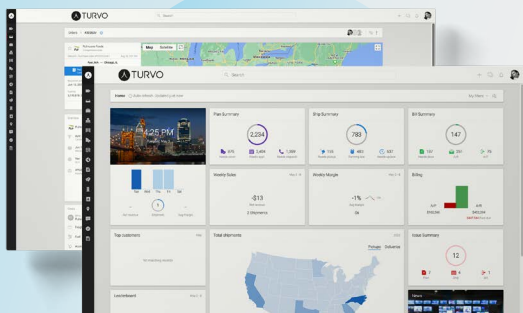
To overcome the TMS-EDI challenge, companies have the following options:

- Handle the flow of EDI messages in a manual mode (Manual data entry to TMS, which goes hand in hand with potential errors and missing data sets causing inefficiency in data management and trading partner communications)

- Develop a solution for EDI integration in-house (Require investments in a data integration tool and a team of integration experts who possess specific EDI knowledge and are capable of doing EDI -API mapping)

- Migrate to a TMS that allows the exchange of EDI messages out of the box. (Given that each party has its own twist on EDI messages, and those messages can be transferred over various transport protocols, this is a rare option on the market).

While the industry is beginning the shift to a more modern technology, the global supply chain is notoriously slow to change. As a result, many businesses are still heavily reliant on EDI transfers. However, EDI systems can vary considerably from one company to the next, which leaves considerable gaps in both visibility and the quality of the data being transferred. Shippers and carriers needed a solution that could improve their interaction and make EDI more viable, which created the perfect scenario for a partnership between Youredi and Turvo.



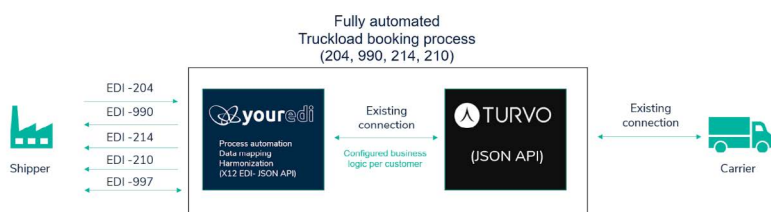
The Turvo Solution

EDI (electronic data interchange) can be a clunky, unwieldy system. The vast volume of data being transferred is large enough that it has to be done in batches and can be outdated or obsolete by the time it's processed. In terms of processing and interpreting the data, a company usually has to employ specialists that are specially trained for just such a process. Turvo has replaced this archaic workflow with its REST API. Turvo users get a fast and seamless experience. No need for specialists that can handle EDI-API mapping or even a setup change in the TMS.

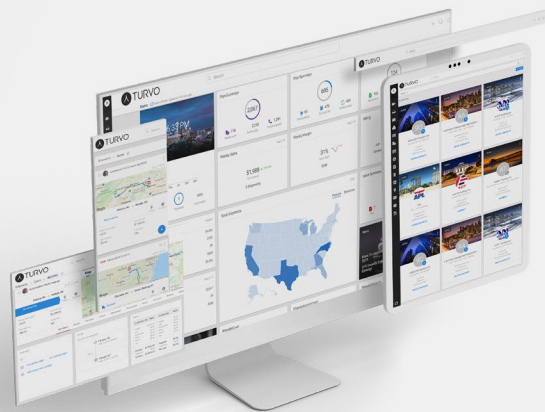
Visibility within the supply chain is invaluable. Both shippers and carriers need the ability to communicate and interact seamlessly in order to cut headwinds and improve operations both upstream and down. Youredi fully handles the connectivity between shippers and Turvo's transportation management system. Turvo, in turn, interprets and automates data processing for carriers

Turvo TMS is a modern transportation management system that enables 100% visibility and real-time interaction with all players in your supply chain regardless of the technology or data format/standard they use. Relying on Turvo, you can move away from spreadsheets and in-house integrations integral for outdated TMS software.

Turvo's best-in-class cloud technology and sophisticated user experience ensure smooth connectivity, collaboration, and visibility with all your business partners. Therefore, more and more shippers, carriers, and freight brokers identify Turvo as a TMS that will carry them into the next growth phase.



Collaboration with
Turvo increased the
usability of EDI



In Closing

Until a time comes that all global supply chains are operating on the same one system language, shippers and carriers must be able to communicate as effectively and efficiently as possible. Youredi helps Turvo bring that necessity to the forefront, allowing Turvo customers access to clear and actionable data that will drive their businesses forward towards success.